

Spooktacular Fall Fleece Sale & Spin-in

Attn: Handspinners and Felters

Mark your calendar for:

Saturday, October 30, 2021 - from 10 am to 3 pm

bide a wee farm Jacob and Navajo-Churro Sheep

&

Whistlestop Farm Shetland Sheep

At: Whistlestop Farm, 30881 SW Bald Peak Rd, Hillsboro 97123**

Huge wool stash in a wide range of natural colors - many at clearance prices!

Jacob

Navajo-Churro

Shetland

Border Leicester/Gotland Crosses

\$5 fleeces - \$10 fleeces - \$15 fleeces - \$20 fleeces - Some higher

Also available; roving, yarn, sheepskins, horn buttons, cleaned sheep skulls, and more...

Bring along your spinning wheel, drop spindle, knitting, or current craft project,
and a sack lunch and join us for the day.

PLEASE NOTE:

This will be an open air event with plenty of room for social distancing.

Masks must be worn, and hand washing will be available.

For questions, contact us:

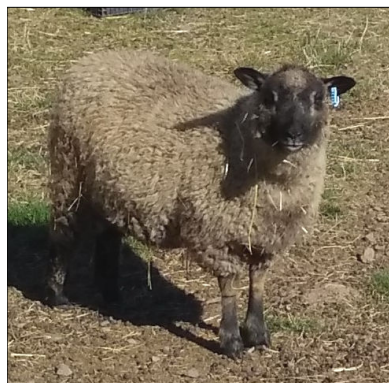
www.bideaweefarm.com/woolsale.htm / bidewee@aol.com / 503.899.2096 C - 503.538.7987 H

www.Whistlestopshetlands.com / whistlestop.bc60@rocketmail.com / 503.880.0630

**Driving Directions:

From Hwy 217 at Beaverton, turn West on Hwy 10 (Farmington Road). Farmington Rd ends at Hwy 219 (about 10 miles). Turn left. Immediately turn right on Bald Peak Road.

Continue on Bald Peak for 3/4 mile, yellow house on the right.



Shetland Ewe Lamb



Jacob Ram



Navajo-Churro Ewe